

Kellyville  
Wither's Road  
\$899,594

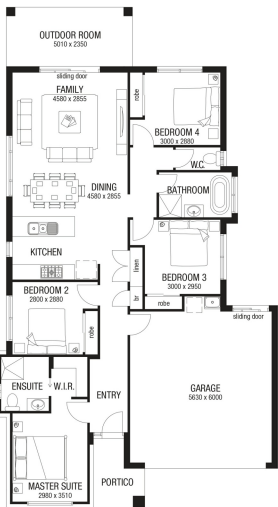
Lot 103, Wither's Road, Land size 361.5 sqm<sup>2</sup>

4 2 2



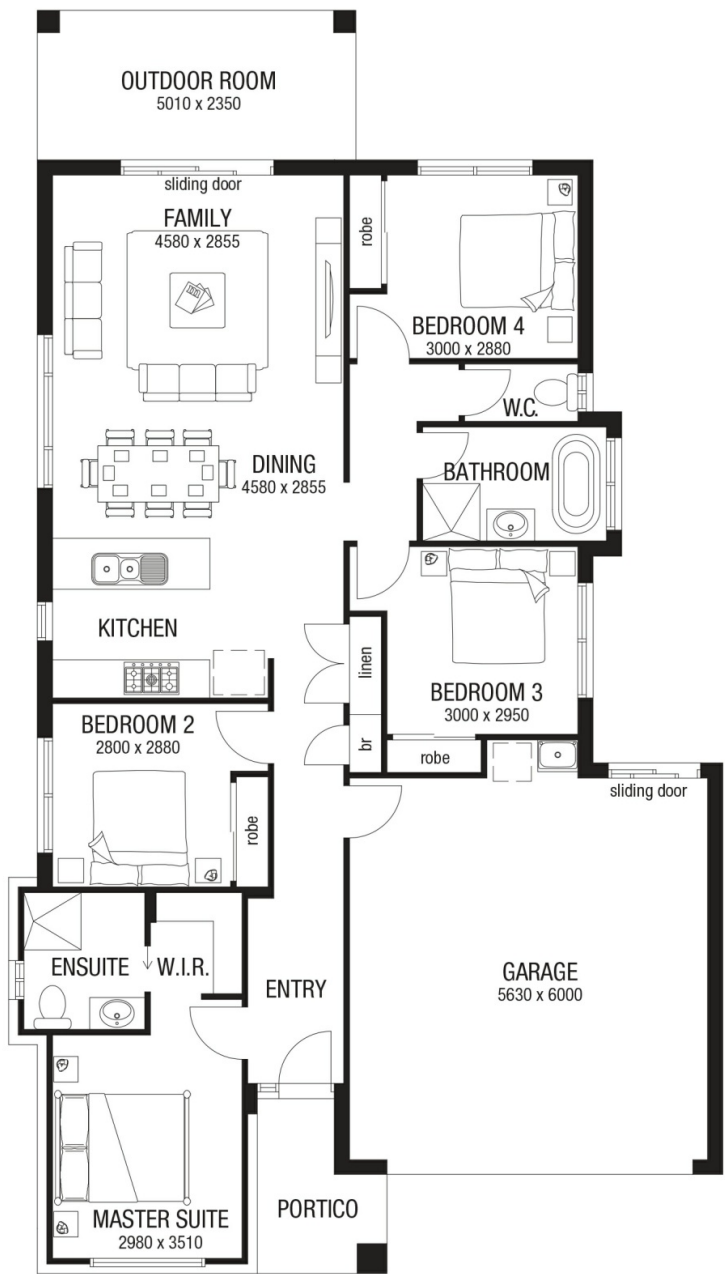
Package includes:

- Ducted A/C
- Landscaping
- Colour-on driveway with natural grey crossover
- Flyscreens
- Roller blinds
- Developer requirements



Specifications

	4	2	2
Property Type	House & Land		
Contract Type	2 Part Contract		
Titled	No		
Estimated Date	12/2019		
Land Area	361.5 sqm		
Land Price	\$530,000		
House Price	\$369,594		
Total Price	\$899,594		
Design	Piccolo 19		
Facade	Bungalow		
Reservation Deposit	\$1,000		
Specification	Met Basics		





## PRE-CONSTRUCTION

- ✓ HI fixed price contract, plans and specifications
- ✓ Contour survey, Engineer's soil report and slab design
- ✓ Council building application fees (Standard applications, excluding town planning, relaxations etc.)
- ✓ Contour survey
- ✓ Pre-determined colour scheme by Metricon Studio M décor designers

## SITE WORKS, FOUNDATIONS & CONNECTIONS

- ✓ Balanced cut & fill excavation for up to 1000mm site fall over the building platform
- ✓ Waffle pod concrete slab up to H2 soil classification
- ✓ Piering (if required) to suit balanced cut & fill excavation for up to 1000mm site fall over the building platform
- ✓ Termite treatment (reticulated and rechargeable perimeter systems)
- ✓ Sewer and stormwater connections to existing serviceable connection points
- ✓ Electrical mains
- ✓ Water connection from pre-tapped water main
- ✓ House constructed for N2 wind rating conditions (W33)
- ✓ 3000L Slimline rainwater tank, including concrete slab, pump, connections & recycled water plumbing to WC's, (1No.) external tap and Laundry
- ✓ No allowance is made for retaining walls

## ENERGY EFFICIENCY

- ✓ Ceiling insulation batts rating R4.1 to ceiling area as required
- ✓ Sisalation "Wall-wrap" and R2.0 insulation batts to external stud walls (includes R2.0 insulation batts to Garage/House internal walls)
- ✓ Energy efficient aluminium windows and sliding door units
- ✓ Chromagen 170 litre heat pump hot water unit
- ✓ 500 KPA water pressure limiting device

## FRAME, BRICKS, WINDOWS, ROOF TILES & GARAGE

- ✓ Termite resistant frame and truss system
- ✓ Clay bricks from the builder's standard range
- ✓ Off white coloured mortar with ironed joints
- ✓ Powder coated aluminium windows in the standard builder's range of colours with clear glass and locks to openable windows
- ✓ Obscure glazing to all wet area windows.
- ✓ Concrete roof tiles in the standard builder's range of colours / profiles
- ✓ Colorbond® panel lift door to the front facade of the garage in the standard builder's range of colours
- ✓ Remote Control Garage door system
- ✓ Colorbond® fascia and gutter in the standard builder's range of profiles and colours
- ✓ Painted PVC downpipes to suit rainwater tank (if applicable) OR Colorbond® downpipes in the standard builder's range of profiles and colours

## EXTERNAL FEATURES

- ✓ Painted timber entry door frames – sidelights, if applicable, in clear glass
- ✓ 2040mm high x 820mm wide Hume XN1 clear glazed painted external front entry hinged door with clear glass
- ✓ 2040mm high x 820mm wide Hume Glass Opening XF3 painted hinged external door with clear glass to other external doors (if applicable)
- ✓ Lane Caletta entrance lever set to hinged external doors (including Garage/house access door)
- ✓ Lane Specifier series double cylinder deadbolt to external hinged doors
- ✓ Slab rebate to all standard external sliding doors
- ✓ Two (2) coat external paint system to external trim and doors using Dulux paints to manufacturers standard specifications
- ✓ Two (2) external wall garden hose taps
- ✓ Integrated plain concrete slab to Portico/Porch and Outdoor Room (if applicable)
- ✓ Retaining walls (if required)
- ✓ External builders house clean
- ✓ Site clean after construction

## KITCHEN FEATURES

- ✓ 20mm Caesarstone bench tops, selected from the builder's standard range.
- ✓ Laminate finish overhead cupboard (up to 800mm wide with side hinged doors) to each side of rangehood
- ✓ Laminate finish cupboards in the standard builder's range of laminates and door handles
- ✓ Contrasting laminate colour
- ✓ Microwave provision, including single power point and single pot drawer below
- ✓ Dishwasher provision, including single power point and plumbing point
- ✓ 600mm Bellissimo by Technika TB60FDTSS-5 stainless steel/black glass electric oven
- ✓ 600mm Technika CFM641-2 electric cooktop
- ✓ 600mm Technika CHEM52A6S-2 stainless steel canopy rangehood
- ✓ Base Mk3 1200mm, 1 1/4 end bowl stainless steel sink
- ✓ Base Mk2 upswept kitchen sink mixer tap

## LAUNDRY FEATURES

- ✓ Base 42L trough and cabinet
- ✓ Base Mk2 upswept sink mixer tap
- ✓ Round chrome floor waste

## BATHROOM, ENSUITE & TOILETS

- ✓ 20mm Caesarstone bench tops, selected from the builder's standard range
- ✓ Laminate finish vanities in the standard Builders range of laminates & door handles.
- ✓ Clear toughened glass shower screens with powder coated aluminium frames in the standard builder's range of colours
- ✓ 1100mm high mirrors with powder coated aluminium frames seated on vanity to match vanity width
- ✓ Base inset 540 oval, white vitreous china basin with chrome waste
- ✓ Base 1560mm freestanding bath with chrome waste
- ✓ Base Mk2 basin mixers
- ✓ Base Mk2 shower mixer
- ✓ Base rail shower
- ✓ Base Mk2 bath mixer with Posh Solus 220mm wall bath spout
- ✓ Phoenix "Gen X" range towel rails/rings and toilet roll holders in chrome
- ✓ Posh Domaine white vitreous china close coupled rimless toilet with soft close quick release seat
- ✓ Chrome square floor wastes where required.

## CERAMIC TILING

- ✓ Ceramic tiles Selected from standard builder's range
- ✓ Standard wet areas as nominated on the Master Plan
- ✓ Bathroom and Ensuite are 2000mm high to showers – 1200mm to walls adjacent to bath – skirting tiles
- ✓ Kitchen – splashback. Laundry and toilet floors - splashback over tub – skirt tile
- ✓ Main floor (refer working drawings), Portico/Porch, Outdoor Room (where applicable)
- ✓ No allowance has been made for frieze or decorator tiles
- ✓ No allowance has been made for laying of border tiles, 45 degree patterns or floor feature tile layouts

## ELECTRICAL

- ✓ Earth leakage safety switch and circuit breakers
- ✓ Single phase underground power provision from existing supply point
- ✓ Meter box will be installed on the side nearest mains connection point
- ✓ One (1) double power point to each room
- ✓ LED downlights throughout (excluding Kitchen and Garage)
- ✓ LED ceiling mounted light to Kitchen
- ✓ LED downlights above Kitchen island bench
- ✓ Strip fluorescent light with diffuser to Garage
- ✓ Two (2) external light points
- ✓ Home Network Lite package, including an enclosure, NBN provision, one (1) phone point, two (2) TV points & three (3) data points
- ✓ Smoke detectors hard wired with battery backup as per BCA requirements

## INTERNAL FEATURES

- ✓ 2400mm (nominal) ceiling height throughout to single and double storey homes
- ✓ Carpet grade staircase with paint grade maple hand rail and stainless steel balusters to double storey homes
- ✓ Category 1 range carpet including standard foam underlay (refer working drawings)
- ✓ Internal Hume 2040mm high flush panel passage doors
- ✓ Door stops standard builder's range
- ✓ Lane Caletta internal door furniture
- ✓ Aluminium framed Polytec melamine 2065mm high sliding robe doors (flush panel hinged doors to walk in robes)
- ✓ Shelving – robes: one white melamine shelf with hanging rail. Broom: one white melamine shelf. Pantry/Linen: four white melamine shelves.
- ✓ Skirtings and architraves are 66mm high (nominal) paint finish as per builder's standard range
- ✓ 90mm cove cornice throughout home
- ✓ Internally, three (3) coat internal paint system using Dulux Professional paints – 2 colours allowed (i.e. 1 colour to walls & 1 colour to timber work) to paint manufacturers standard specifications. Two (2) coats to ceiling using Dulux Professional ceiling white paint to paint manufacturer's standard specifications

## WARRANTIES

- ✓ 6 months maintenance period
- ✓ Statutory structural guarantee period
- ✓ Builders Lifetime structural guarantee

**Metricon reserve the right to alter any of the above specifications due to continuing product development or availability of items.**

Signature of Client

Signature of Client

Date

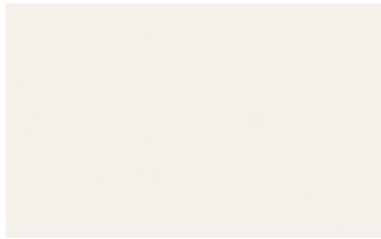
# The Breeze Series



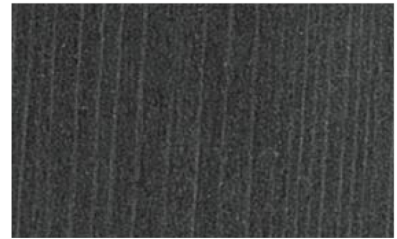
**Internal**  
**RAVEN**



**KITCHEN BENCHTOP**  
Caesarstone 20mm Ice Snow



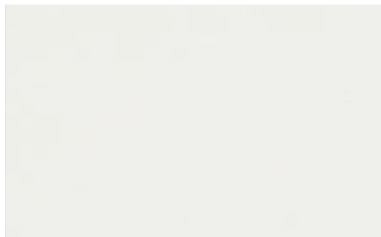
**KITCHEN BASE CABINETRY**  
Laminex Ghostgum



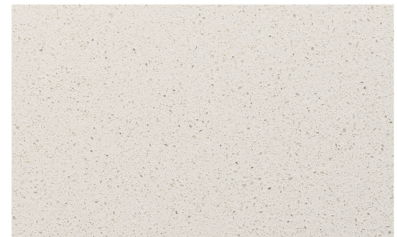
**KITCHEN OVERHEAD CABINETRY**  
Laminex Burnished Wood



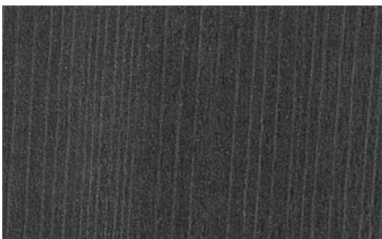
**KITCHEN KICKER**  
Formica Stainless Steel



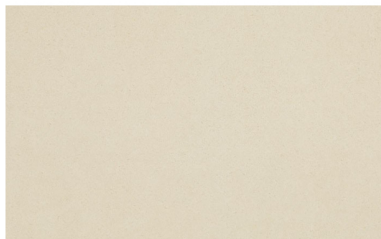
**TILED SPLASHBACK**  
BELWPS99 Café Light Cream



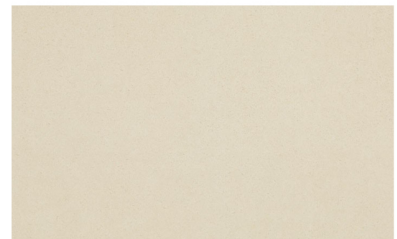
**WET AREA BENCHTOP** (Excludes Laundry)  
Caesarstone 20mm Ice Snow



**WET AREA BASE CUPBOARDS/KICKER**  
(Excludes Laundry)  
Laminex Burnished Wood



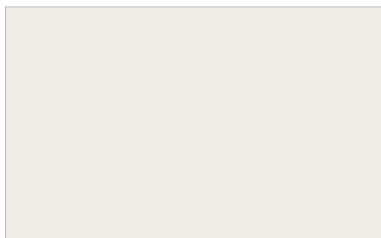
**TILES MAIN FLOOR**  
NT13-2001FL



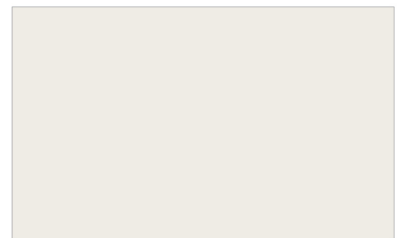
**TILE WET AREA** (Floor & Walls)  
NT13-2001FL



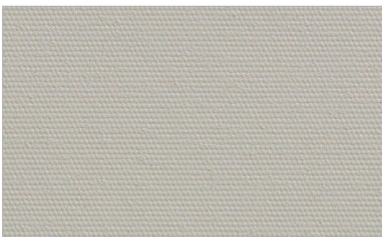
**CARPET**  
In The Loop - Channel SC0515



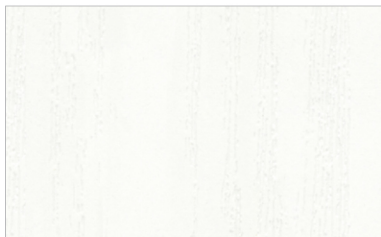
**CEILING**  
Dulux Natural White



**WALLS/ SKIRTING AND ARCHITRAVE**  
Dulux Natural White



**BLOCK OUT BLIND**  
Niagara Zen Illusion



**ROBE DOOR POLYTEC MELAMINE COLOUR**  
Classic White

Initial \_\_\_\_\_/\_\_\_\_\_

\*If applicable. ^Safety screens to all side and rear opening window sashes and sliding doors. Fly screens to all front facade opening window sashes. Images are for illustrative purposes only and while every effort has been made to correctly represent colours for this scheme, actual colours may vary. Fridge not included. Materials, colours and brands are subject to availability and may be substituted if not available. Schemes may be changed without notice and external schemes are subject to developer covenant approval. This colour scheme is exclusive to The Breeze Series by Metricon and any approved customer variations may incur additional costs. For further information contact your property investment partner. NSW Builders License 174699C. 20180828



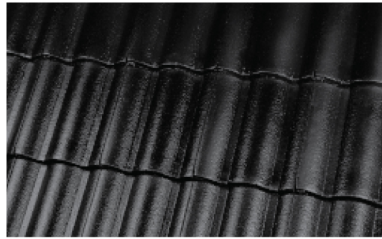
# The Breeze Series



**External**  
**RAVEN**



**BRICKWORK**  
Everyday Life - Freedom



**TILED ROOF**  
Monier Elabana Sambuca



**WINDOWS / DOORS**  
Colorbond® Monument



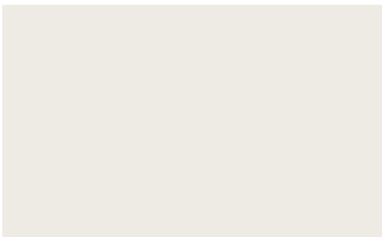
**GARAGE DOOR**  
Colorbond® Monument



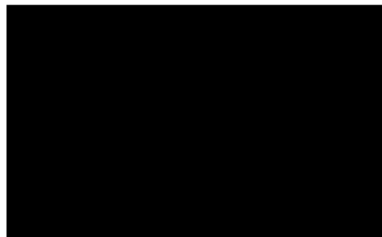
**PAINTED FRONT ENTRY DOOR & CLADDING\***  
Dulux Heifer



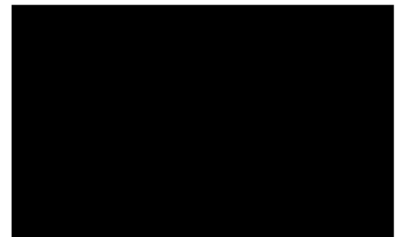
**RENDER** (Design Specific)  
Dulux Mud Puddle



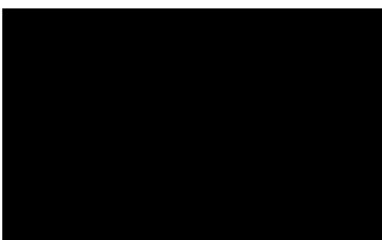
**EAVE**  
Dulux Natural White



**GUTTER**  
Colorbond® Night Sky



**FASCIA**  
Colorbond® Night Sky



**DOWNPIPE**  
Colorbond® Night Sky



**EXTERNAL HINGED DOOR**  
Dulux Heifer



**EXTERNAL FLOOR TILE** (Design Specific)  
NT17-5085FL



**DRIVEWAY**  
Coal

Initial \_\_\_\_\_/\_\_\_\_\_

\*If applicable. ^Safety screens to all side and rear opening window sashes and sliding doors. Fly screens to all front facade opening window sashes. Images are for illustrative purposes only and while every effort has been made to correctly represent colours for this scheme, actual colours may vary. Fridge not included. Materials, colours and brands are subject to availability and may be substituted if not available. Schemes may be changed without notice and external schemes are subject to developer covenant approval. This colour scheme is exclusive to The Breeze Series by Metricon and any approved customer variations may incur additional costs. For further information contact your property investment partner. NSW Builders License 174699C. 20180828